

FORT LAUDERDALE DOWNTOWN HELISTOP (DT1)

201 S.E. 2nd Ave., 6th Level (City Parking Garage), Fort Lauderdale, FL 33301

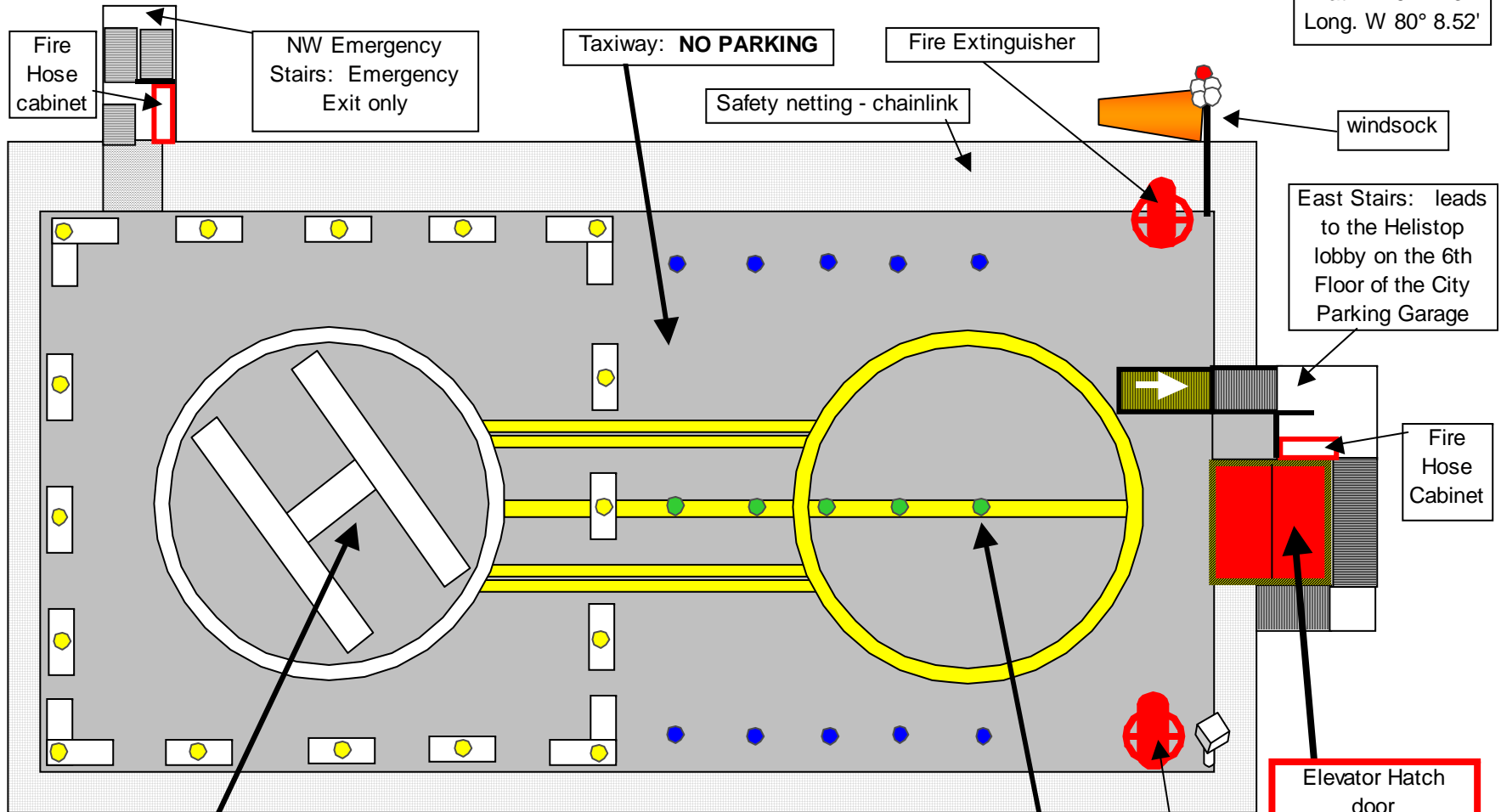
24- hour Phone: (954) 523-4354

UNICOM: 123.05 MHz

FLL Tower: 119.30 MHz (Class C Airspace)



Lat. N 26° 7.23'
Long. W 80° 8.52'



Landing position (84' X 84')/ FATO:

11,900 lbs. maximum gross weight
46 feet maximum main rotor diameter
114 feet AGL deck elevation
One helicopter only
Open 24-hours
deck lighting: dusk to dawn
Engine shutdown prohibited: **NO PARKING**
For assistance call anytime (954) 523-4354.

Helicopter Parking Position:

Reservations required at all times -
Call the Helistop (954) 523-4354 to receive approved parking times and access instructions.
One helicopter only
No landings or takeoffs from this position
No landing or helicopter parking fee
For assistance call anytime (954) 523-4354
Vehicle parking permits available

Elevator Hatch door
**- DANGER -
STAY OFF**
Only operated by
Helistop Staff

Fire Extinguisher