



# CITY OF FORT LAUDERDALE PEDESTRIAN & BICYCLE CRASH FACTS

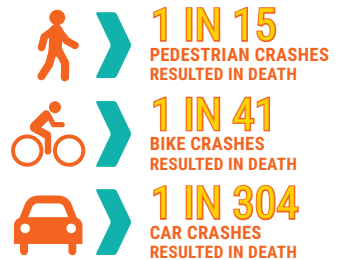
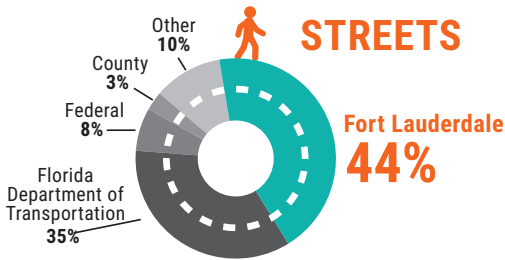
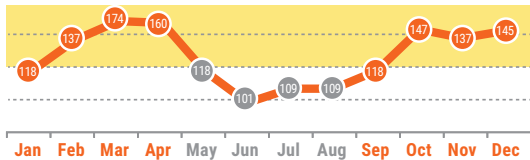
## CRASHES COMMONLY OCCUR



**FRIDAYS**  
2 PM - 8 PM

### SEPTEMBER THROUGH APRIL

Numbers represent "total reported injury crashes per month"



**BETWEEN 2009-2014** | **57 DEATHS 881 INJURIES** | **14 DEATHS 568 INJURIES**

**82% NON-INTERSECTIONS** | **18% INTERSECTIONS**

**73% OF DEATHS OCCURED BETWEEN 4 PM - 4 AM**

**ALCOHOL INVOLVED IN 23% OF DEATHS**

### CRASH CONDITIONS

