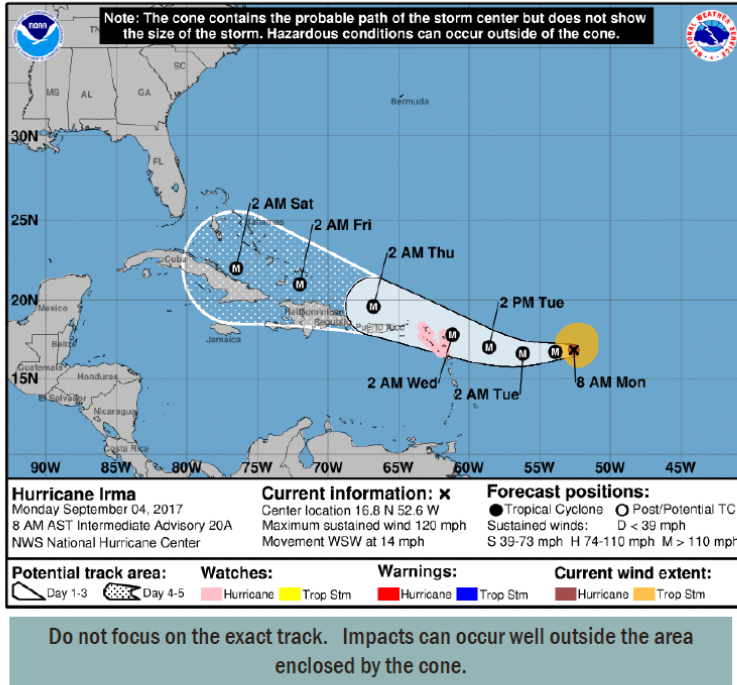


Situation Overview

Hurricane IRMA



Miami/South Florida
WEATHER FORECAST OFFICE



- Major Hurricane Irma still expected to be near the South Bahamas late this week
- Uncertainty of the track remains moderate to high as the storm approaches Florida
- Impacts to South Florida are not known at this time

9/4/2017 8:54 AM

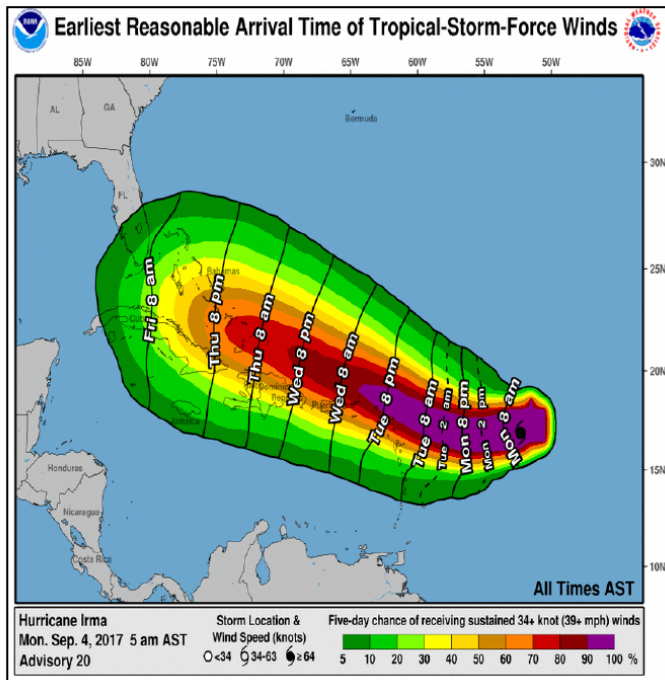
www.weather.gov/miami

Earliest Time of Arrival

Hurricane IRMA



Miami/South Florida
WEATHER FORECAST OFFICE



- Earliest reasonable arrival time for:
 US Virgin Islands - late Tuesday
 Puerto Rico - mid week
- Earliest reasonable arrival time of possible Tropical Storm Force winds:
 - late Friday into the weekend

9/4/2017 8:54 AM

www.weather.gov/miami

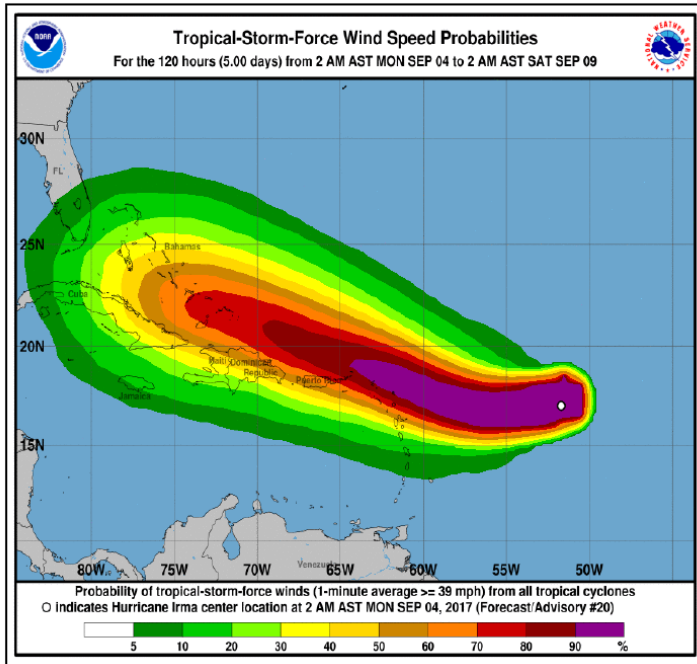
Wind Speed Probabilities

Tropical Storm Force Winds



Miami/South Florida

WEATHER FORECAST OFFICE



Trends

- Another slight southward trend in the probabilities over the past 12 hours

Locations of Concern

- Northern Lesser Antilles, US Virgin Islands, Puerto Rico, Bahamas, possibly South Florida

Timing

- Still too early to determine specific times for South Florida

9/4/2017 8:54 AM

www.weather.gov/miami

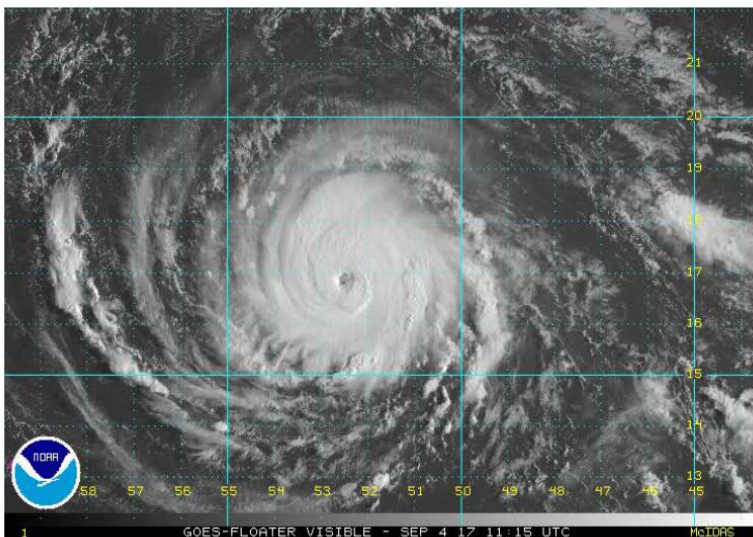
Situation Overview

Hurricane IRMA



Miami/South Florida

WEATHER FORECAST OFFICE



Hurricane Hunter aircraft found Irma a little stronger this morning.

SUMMARY 800 AM EDT

LOCATION...16.8N 52.6W

- ABOUT 610 MI E OF THE LEEWARD ISLANDS
- MAXIMUM SUST WINDS: 120 MPH/H (CAT 3)
- PRESENT MOVEMENT: WSW OR 255 DEGREES AT 14 MPH.
- MINIMUM CENTRAL PRESSURE: 947 MB (27.96 INCHES)

9/4/2017 8:54 AM

www.weather.gov/miami