

ISLE OF PALMS SEAWALL REPLACEMENT PROJECT

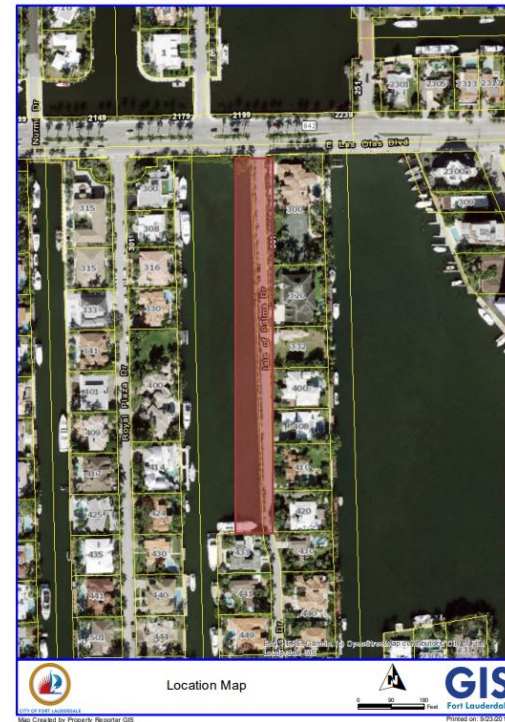
PUBLIC MEETING
SEPTEMBER 30, 2019
CITY HALL COMMISSION CHAMBERS
6:00PM – 8:00PM



CITY OF FORT LAUDERDALE

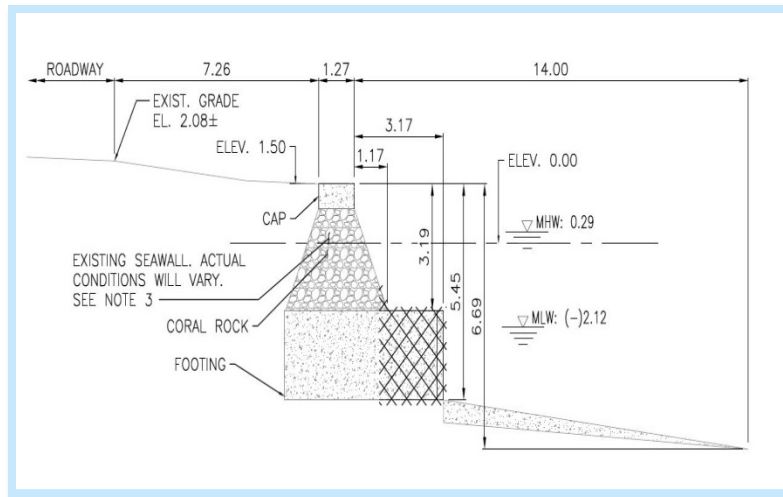
SCOPE OF WORK

- * Replace approximately 900 linear feet of existing City-owned seawall along west side of Isle of Palms Drive
- * Construct upland local drainage improvements benefitting the Isle of Palms Drive public right-of-way
- * Mill and re-surface the existing roadway along seawall length

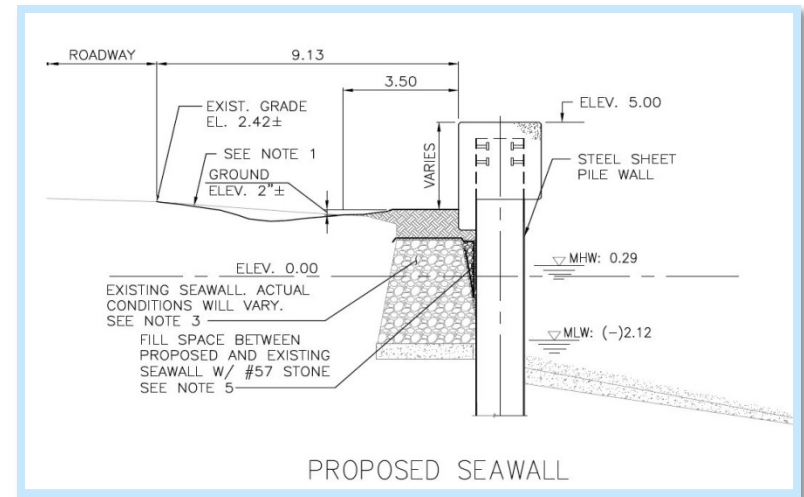


TYPICAL CROSS-SECTION (LOOKING SOUTH)

Existing



Proposed



ISLE OF PALMS DRIVE (LOOKING SOUTH)

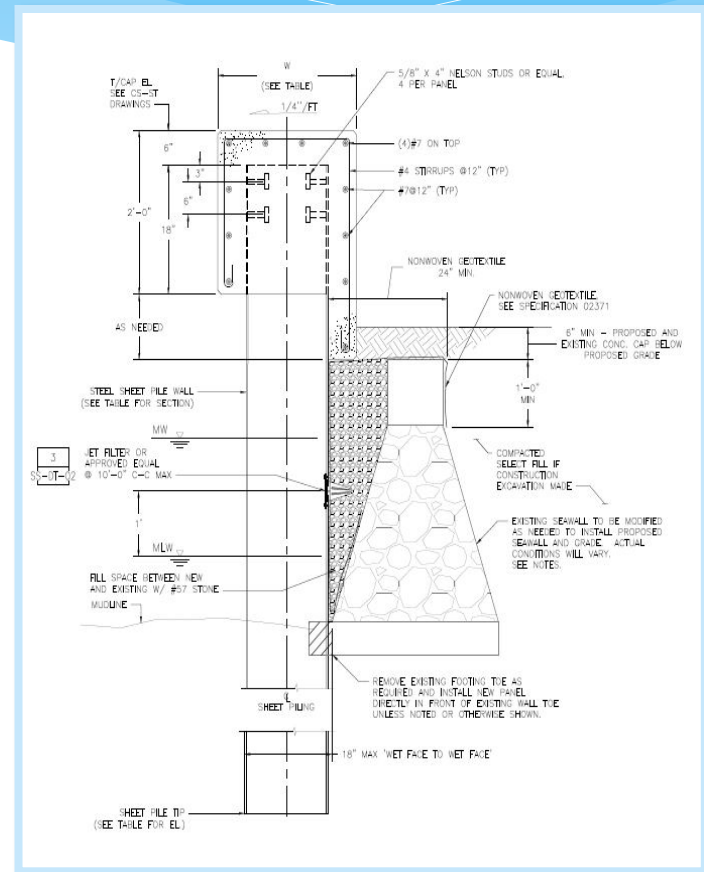
Existing

Proposed



CONSTRUCTION SPECIFICATIONS

- * Seawall elevation (top of concrete cap) – 5.0' NAVD
 - Approximately 3.5 feet higher than existing seawall
 - NAVD – datum used to determine base flood elevations
- * Steel sheet pile
 - 28 feet in length
 - Coated for protection against corrosion
 - Urethane zinc primer
 - Polyamine epoxy
- * Concrete cap
 - 26 in wide x 24 in height
 - Will look like a concrete wall from roadside



BENEFITS TO THE NEIGHBORS

- * Reduced frequency, intensity and duration of tidal flooding on Isle of Palms Drive
 - Protect adjacent properties from storm surge
 - Improved traffic
 - Safer access to Isle of Palms neighborhood
- * Improved local right-of-way drainage
- * New roadway surface (driving) course
- * Help maintain property value
- * Protect existing infrastructure by replacing deteriorated seawall
- * Swale width to increase by a minimum of 1.5 feet
 - New sod will be installed

IMPACTS DURING CONSTRUCTION

* Traffic

- Expect west (southbound lane) to be closed
- Flaggers will direct traffic

* Noise and vibration

- Sheet pile driving
 - Contractor will monitor noise and vibration to comply with contract specifications
 - City will retain independent vibration and noise monitoring services
- Concrete trucks, materials deliveries, paving equipment

TENTATIVE SCHEDULE

- * November 5, 2019
 - Contract award by City Commission
- * Mid December, 2019
 - Contract to be fully executed
- * Early to mid January 2020
 - Notice to Proceed (NTP) for Construction
- * Late September 2020
 - Construction fully completed

QUESTIONS?

* City of Fort Lauderdale contact information:

Francisco Rios, Project Manager – Public Works Engineering Division
frios@fortlauderdale.gov 954-828-5807

Rares Petrica, P.E., Senior Project Manager – Public Works Engineering Division
rpetrica@fortlauderdale.gov 954-828-6270

Omar Castellon, P.E., PMP, ENV SP, Chief Engineer, Public Works Engineering Division
ocastellon@fortlauderdale.gov 954-828-5064

Nancy Gassman, Ph.D., CC-P, LEED Green Associate - Assistant Public Works Director - Sustainability
ngassman@fortlauderdale.gov 954-828-5769