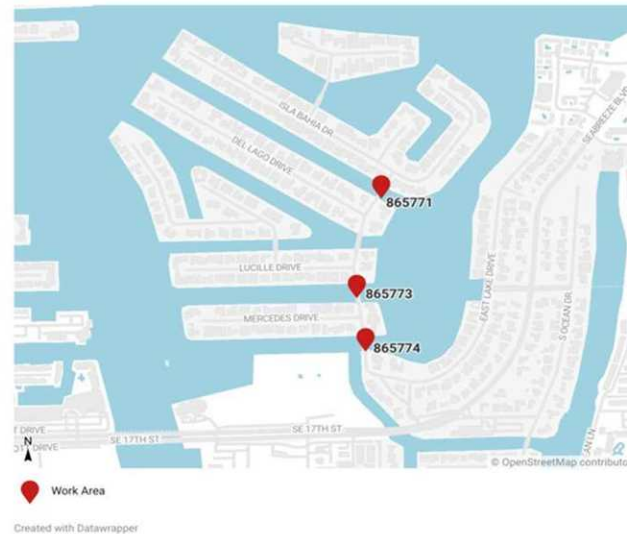




CITY OF FORT LAUDERDALE PUBLIC MEETING



West Lake Drive Bridge Replacement In Harbor Beach



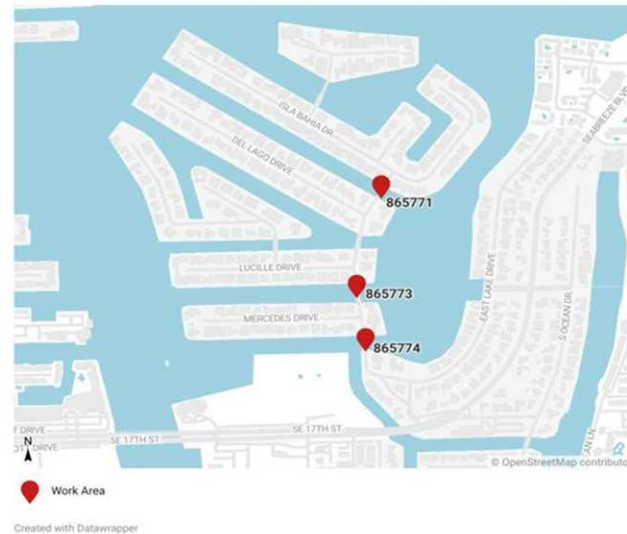
Public Meeting
April 11, 2024
THE PRESENTATION WILL BEGIN AT 6 P.M.



CITY OF FORT LAUDERDALE PUBLIC MEETING



West Lake Drive Bridge Replacement In Harbor Beach



**Public Meeting
April 11, 2024**

Team Introductions

- **Raymond Nazaire – City Program Manager**
- **Connie Hayman – City Project Manager**
- **Jill Prizlee – City Chief Engineer**
- **Joseph Martin – Consultant Project Manager**
- **Houman Assari – Consultant Task Leader**
- **Laila Haddad – PIO Consultant**
- **Vanessa Salinas – PIO Consultant**



Agenda

- 1. General Information**
- 2. Project Location and Overview**
- 3. Proposed Improvements**
- 4. Construction sequencing**
- 5. Project Schedule and Cost**
- 6. Questions and Answers**
 - **At the end of the presentation**
 - **Complete a written question form**



Project Documents



Draft project documents are available for public review online.

Project Website

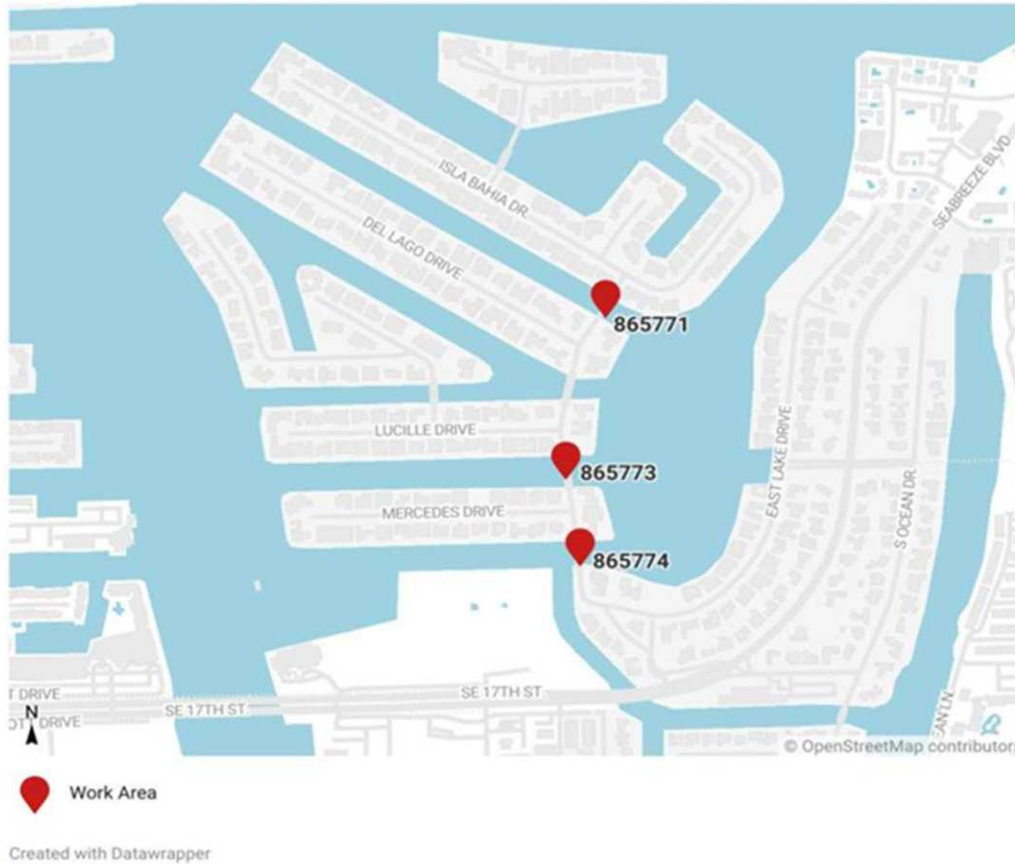
<https://ftlcity.info/hbrvbr>



Project Location and Overview



Project Limits



- Bridges were constructed in 1956
- Existing Bridges are Structurally Deficient
- Load rated for 10 tons
- Bridge piles placed to accommodate a 20' span length
- Bridges do not provide pedestrian access



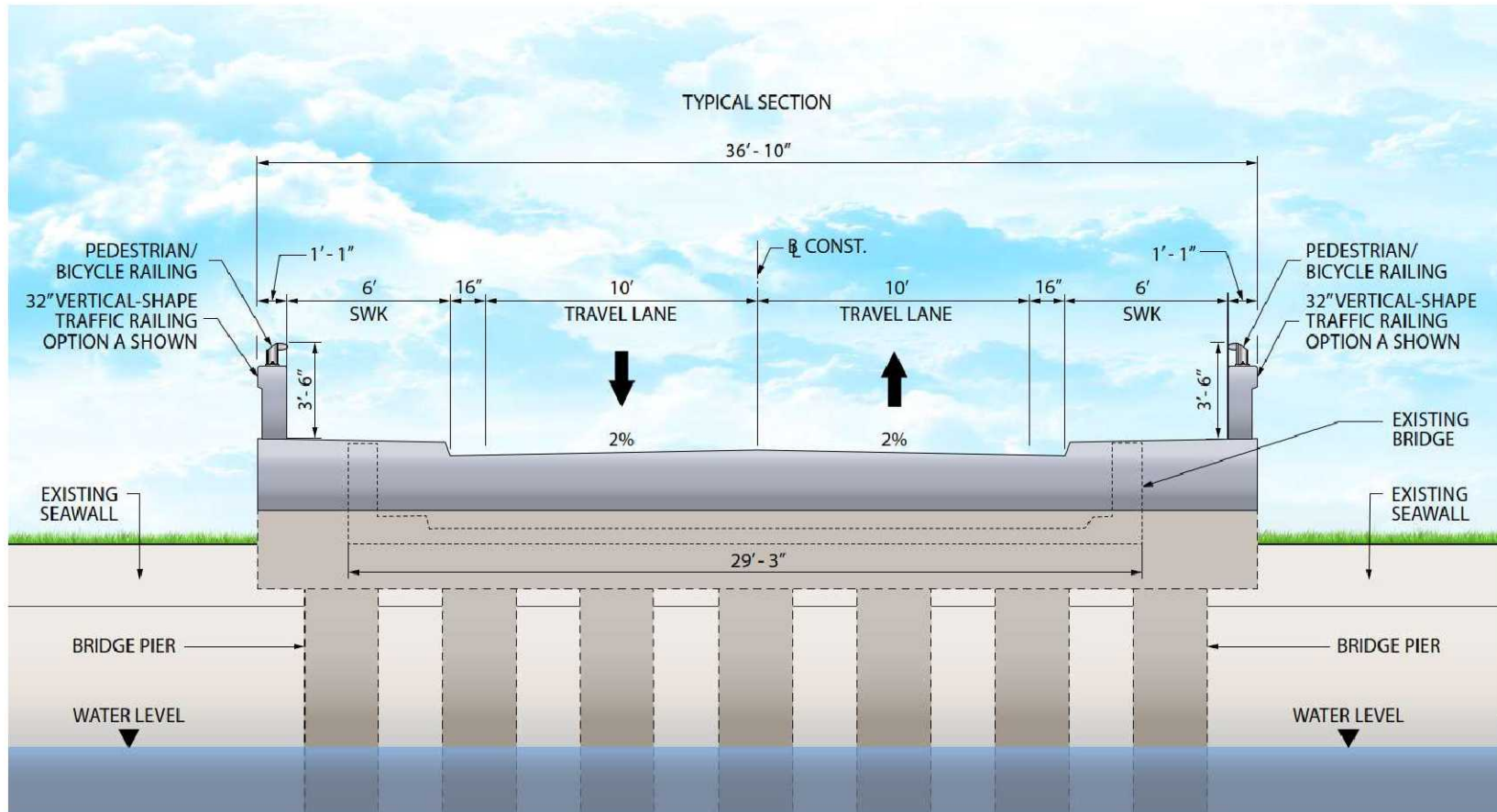
Project Overview

Proposed Improvements:

- Reconstruct bridges – raised to meet City seawall elevation criteria
- Improve pedestrian access across the bridge
- Harmonize West Lake Drive to accommodate higher bridges
- Mill and resurface within the harmonization limits
- Upgrade signage and pavement markings



Proposed Improvements



Proposed Improvements



Proposed Improvements



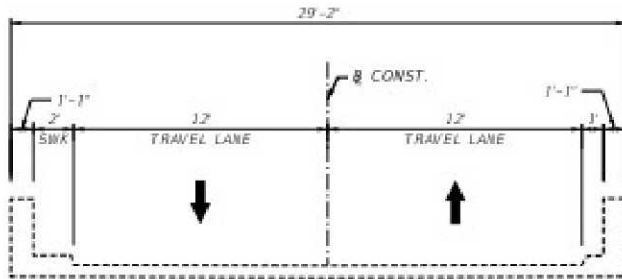
Proposed Improvements



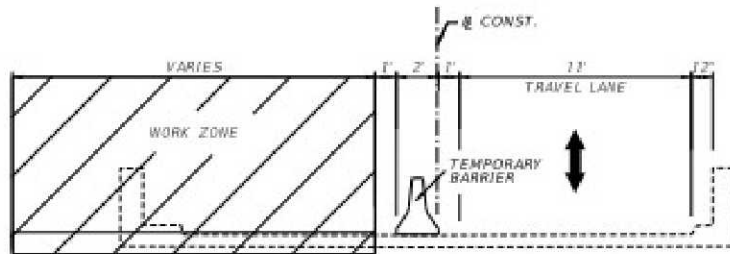
Construction Sequence



Proposed Maintenance of Traffic



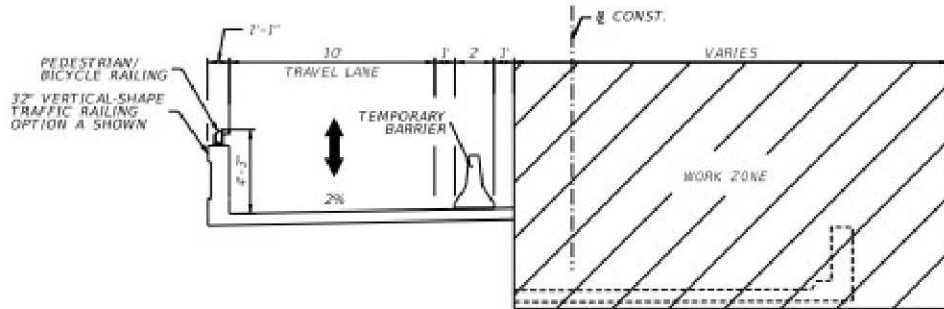
Existing Bridge Section



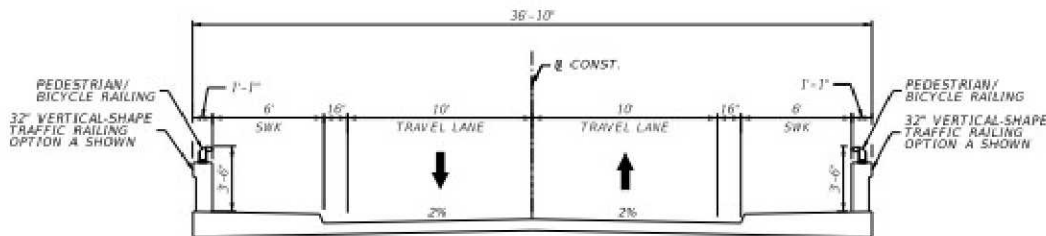
Maintain Traffic one-lane-two-way traffic (temporary signals)
Demolish half of the bridge and construct half of one bridge



Proposed Maintenance of Traffic



Maintain Traffic one-lane-two-way traffic on new bridge
Demolish remainder of old bridge and construct remainder of new bridge



Bridge complete any open to two-lane-two-way traffic



Construction Considerations

- One lane of the roadway will be closed
- Top-down construction is considered to reduce environmental impacts as well as marine dockage and maritime access
- Staggering will be limited to ensure driveway access is maintained
- Utility relocations will be phased to reduce disruptions
- Reduce roadway harmonization limits while accommodating the higher bridges



Project Schedule and Cost



Project Schedule and Cost

Initial planning phase 90% complete

Survey (landside and waterway) complete

Environmental Survey Complete

Landside Geotech Complete

Bridge Concepts and typical section complete

Final Design to commence July 2024

Estimated Construction Start: December 2028

Estimated Completion: Summer 2030

Estimated Construction Cost: \$9,200,000 (City and Federal Funds)



Questions and Answers

